

PRELIMINARY PLAYGROUND PLANNING

THINGS TO CONSIDER DURING THE PLANNING PROCESS

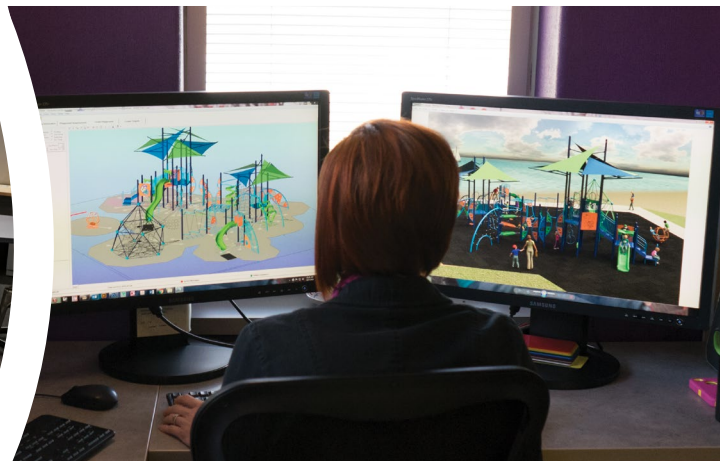
Before we begin the full-pressure design process, it's important to answer some key questions and do a thorough and accurate site assessment. Your playground is meant to serve the community for years to come which means we need to plan for current and future needs. In addition to an accurate site assessment, there are questions on age range, kid capacity and space and budget requirements that are important to consider. This will help your Burke Representative and Burke's Design Team understand your needs and create a space that brings your vision to life while meeting all applicable standards, including the Americans with Disabilities Act. Because a site assessment is critical to the overall playground development process, we do this at no cost to you. It's our mission to bring the best in play and playgrounds to the communities we serve and this is an important first step in fulfilling that mission!

While there are many factors to consider during this step, we will ease you through it and provide our resources along the way. The following questions are important to share with your local Burke Representative.

VISUALIZE YOUR PLAY AREA

A great playground will complement your school or community's uniqueness and be a destination for years to come. We will help you lay out an efficient and exciting design that addresses all of your needs, provides access and meets all applicable safety guidelines. Let's start by defining intentions for your play area:

- What ages and abilities will use this play area?
- How many people are you hoping to accommodate at once (kid capacity)?
- Are there unique stories, a color scheme or theme you'd like to incorporate?
- How do you want the playground to appear from the street to draw people in?
This may affect the components you choose.
- How tall do you want the playground to be? This can affect the amount and type of resilient surfacing you will use and will also affect the visual from the street.
- What combination mix would be best of freestanding independent climbers and motion play events, and composite play structure with platforms, climbers and slides?
- What type of resilient surfacing do you want to have underneath the play structure?
- Do you need additional amenities such as shade, benches or waste receptacles?



PRELIMINARY PLAYGROUND PLANNING

ANALYZE YOUR PLAYGROUND SITE

The features of your site can greatly impact the design of your playground. We will consider all the features of the site as well as the best, most optimal layout that meets your needs. A few things to think about when choosing your playground site:

- Are there existing site conditions that you can work with during the design process (vegetation, walking paths, etc.)?
- What is the drainage situation?
- What other amenities are located near the playground? Parking, athletic fields, restrooms?
- What are the weather conditions? High amounts of rain/sun/snow?



Your local Burke Representative will be happy to help and further discuss these topics as you begin the early stages of planning your new playspace. Before you know it, you will have a destination for children and families to learn, grow and play together!

See how your Burke Playground can go from concept to reality by checking out the full 8 step process to Planning Your Playground at bciburke.com/planning.



BCIBURKE.COM

Burke
PLAY THAT MOVES YOU.

800.266.1250

Trademark(s) are the property of BCI Burke Company. © BCI Burke Company 2021. All rights reserved.